

UDS 101

PATRICK MARSHALEK, MD

What to test?

- ▶ Matrices
 - ▶ Urine
 - ▶ Concentrated
 - ▶ Is it from the patient?
 - ▶ Saliva
 - ▶ Know it is from the patient
 - ▶ Detection Window/Contaminates
 - ▶ Blood
 - ▶ Know it is from patient
 - ▶ Not as concentrated
 - ▶ Hair, Sweat, etc

Why to test?

- ▶ Find drugs you hope to find
 - ▶ Prescribed stimulants, sedatives, opioids, other
 - ▶ Compliance
- ▶ Find drugs you don't want to find
 - ▶ Not prescribed
 - ▶ Illicit/recreational
 - ▶ Noncompliance

DRUG CHECK

NxStep OnSite



NEG (±) POS (+) INVALID

C	---	---	---	---
T	---	---	---	---

ES Patent Pending

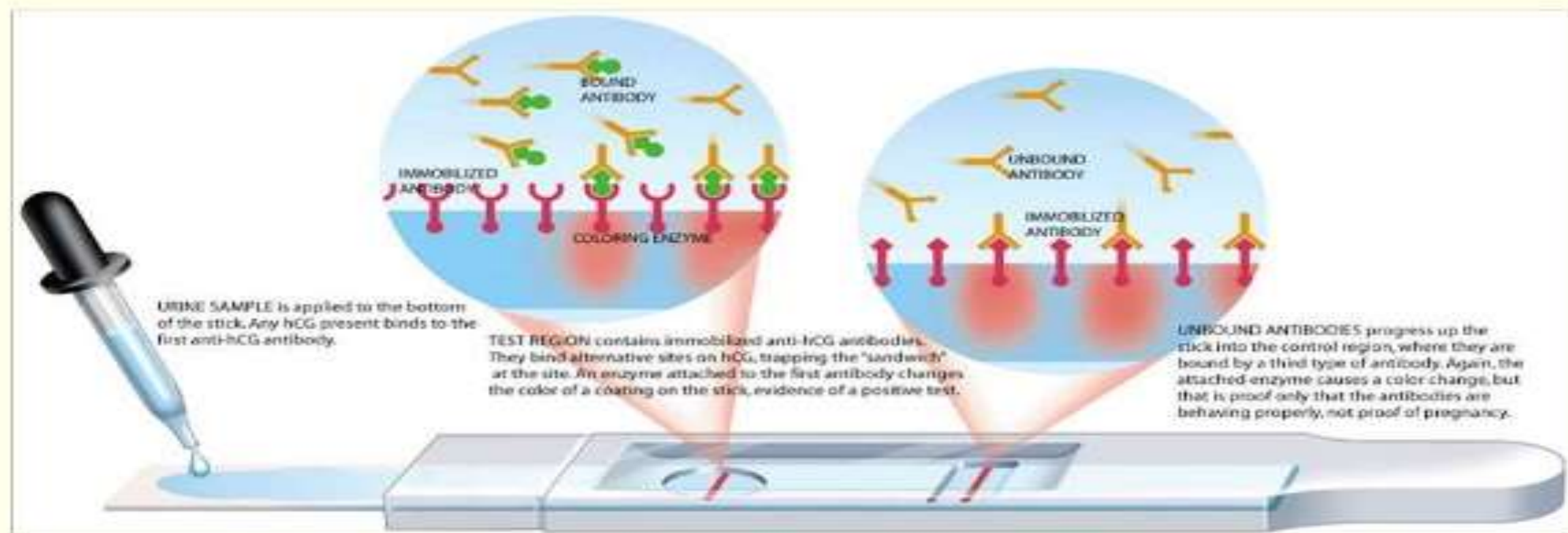
Positive or Negative?

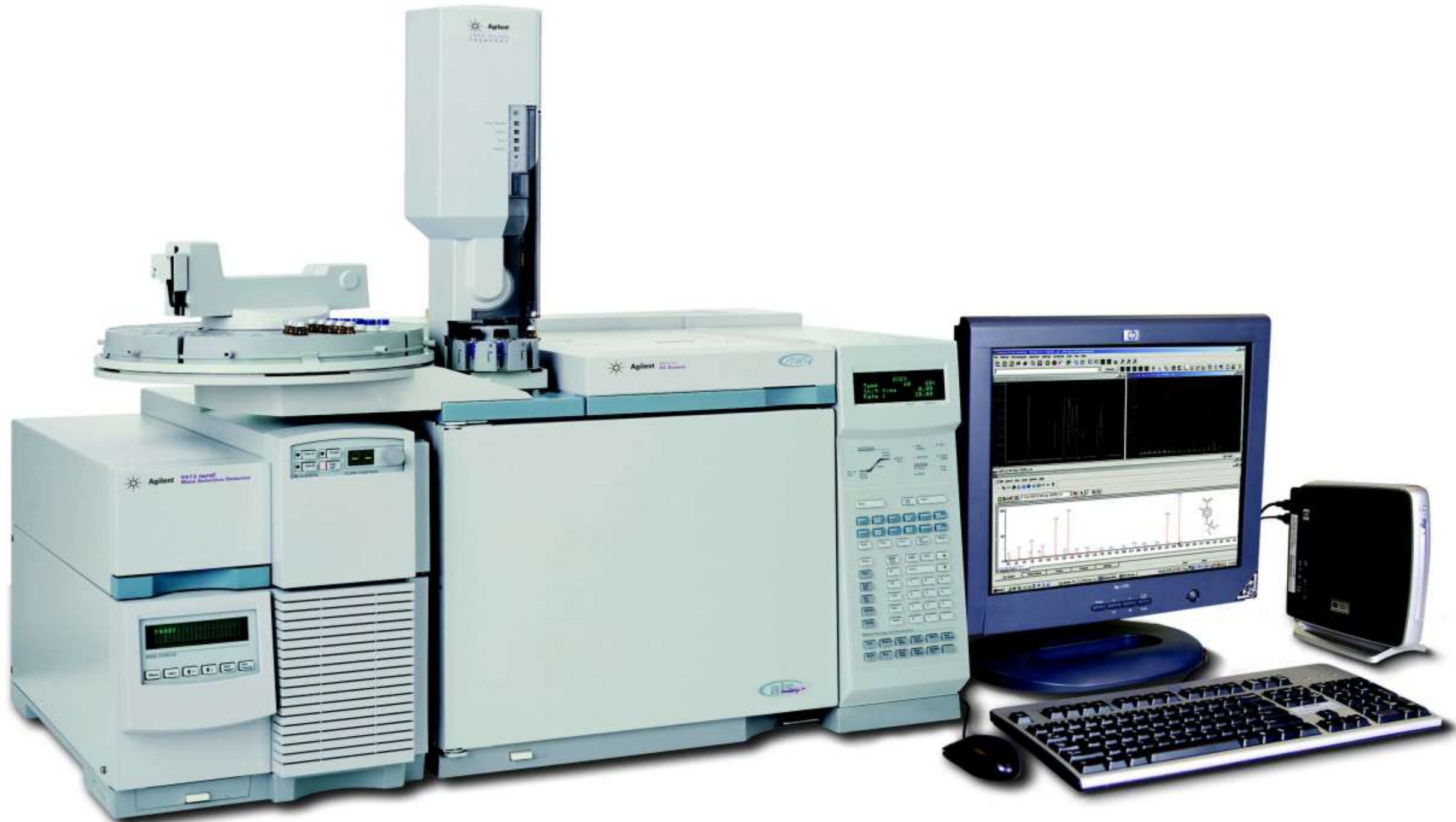
- ▶ Sensitivity and Specificity
 - ▶ Can't have cake and eat it too...
 - ▶ "Cut offs"
- ▶ False Positives
 - ▶ "I swear I didn't use"
- ▶ False Negative
 - ▶ "I swear I am taking my medication"
- ▶ Inconclusive
 - ▶ Steps in place to make sure it is actually from the patient

Qualitative vs Quantitative

- ▶ Qualitative
 - ▶ EIA
 - ▶ Yes/No or +/-
 - ▶ Inconclusive
- ▶ Quantitative
 - ▶ GC/MS
 - ▶ How much
 - ▶ ng/mL
 - ▶ What
 - ▶ Metabolites

Pregnancy Tests





Common Mistakes

- ▶ Pain Panel
- ▶ “Negative for OPI”
 - ▶ Think pregnancy test
- ▶ Opioids
 - ▶ Synthetic
 - ▶ Fentanyl, analogues
 - ▶ Semisynthetic
 - ▶ “codones/morphones,” buprenorphine, methadone
 - ▶ Natural
 - ▶ Morphine, Codeine
 - ▶ Thebaine, Papaverine