



# WV Project ECHO MAT

## *Overview and Expectations*

**June 19, 2017**

**Jay Mason**

**ECHO Coordinator**

**WV Clinical and Translational Science Institute**

# ECHO Overview



People need access to specialty care for their complex health conditions.

There aren't enough specialists to treat everyone who needs care, especially in rural and underserved communities.

ECHO trains primary care clinicians to provide specialty care services. This means more people can get the care they need.

Patients get the right care, in the right place, at the right time. This improves outcomes and reduces costs.

<http://echo.unm.edu/>

# Process Overview

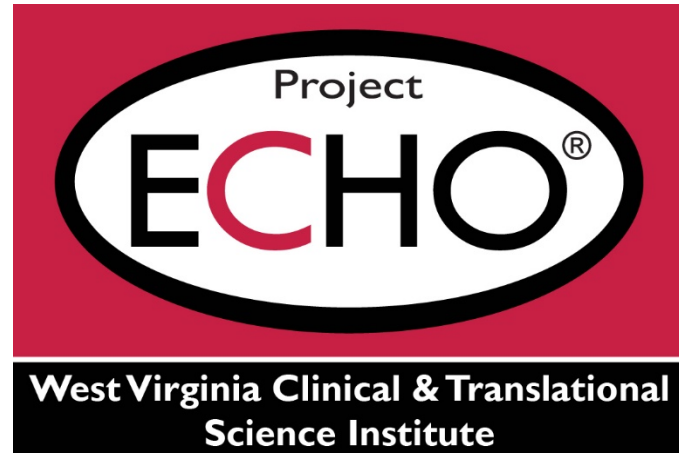
- MAT ECHO sessions
  - Every Monday from 4-5pm via Zoom video conferencing
  - Case Presentations
    - Cases can be submitted at any time using the case presentation form
      - Form will eventually be online
    - Will contact presenting providers no later than the **Thursday** to confirm before
    - Recommendations will be sent to presenting provider after each session
  - 15-20 minute didactics on MAT topic presented each week
    - Presentations will be done by either a “Hub” member or special guest speaker
    - Presentation slides will be available online for reference
  - General Question and Answer

# Sample ECHO Session Agenda

- 4:00-4:05pm: Welcome & Introductions
- 4:05-4:25pm: 1<sup>st</sup> Case Presentation
- 4:25-4:45pm: 2<sup>nd</sup> Case Presentation
- 4:45-5:00pm: Didactic Presentation
- 5:00pm: Adjourn

# Expectations

- Attendance
  - Attendance is not mandatory for every session
  - Encourage participants to join via video conference
- Case Presentations
  - Participating providers are not required to submit or present cases but are encouraged to do so
- Continuing Education Credits
  - Attendance sheets will be submitted to CE office at WVU after each session
  - CE evaluation will be sent out electronically from the CE office at WVU
- Evaluation
  - An ECHO evaluation form will be emailed out quarterly



Questions?